

The advantages of LiDAT at a glance



Operations
LiDAT[®]

Customers

- Documentation of the work assignment
- Increased availability through shorter repair downtimes
- Fast support from the manufacturer
- Optimised economic efficiency of the fleet through insight into the machines' operating times
- Comprehensive fleet management from a single source
- Planning reliability through transmission of geographical position and degree of utilisation of the machine
- Efficient use of the machine for longer service life

Customer service

- Reduction of operating costs
- Optimisation of spare parts management
- Reduction of service costs through direct and / or faster access to the machine
- Maintenance planning adapted to machine availability
- Automated and individually configurable service interval notes

Rental company

- Precise location of the machine
- Daily online reports on capacity utilisation and use of the fleet
- Fleet management for various machine types incl. third-party machines
- Flexible composition of fleets through Groupings (e.g. per construction site)
- Increased safety through area demarcation (GeoFence) and fixed working hours
- Clear calculation basis for rental rates
- Clear utilisation basis for the complete fleet
- Efficient use of the machine for longer service life

The Liebherr Group



Global and independent: more than 70 years of success

Liebherr was founded in 1949 when, with the development of the world's first mobile tower crane, Hans Liebherr laid the foundations for a family business now employing nearly 50,000 people and comprising over 140 companies across every continent.

The parent company is Liebherr-International AG in Bulle, Switzerland, whose associates are exclusively members of the Liebherr family.

Leaders and pioneers

Liebherr is a pioneer and its forward-looking approach has seen it make important contributions to technology history over a wide variety of industries. Employees throughout the world continue to share the courage of the founder, sharing a passion to produce innovative products and a determination to provide world-leading equipment and machinery.

Diversified portfolio

The company is one of the world's biggest construction equipment manufacturers and provides high-quality, user-oriented products and services to sectors including: earthmoving, material handling, deep foundations, mining, mobile and crawler cranes, tower cranes, concrete production and distribution, maritime cranes, aerospace and transportation, gear technology and automation, refrigeration and freezing, components and hotels.

Customised care

Liebherr solutions are characterised by precision, implementation and longevity. The company is committed to technological excellence and to providing customers with solutions that match their needs exactly. That customer focus does not end with delivery of a product but continues through a comprehensive range of back-up and support services.

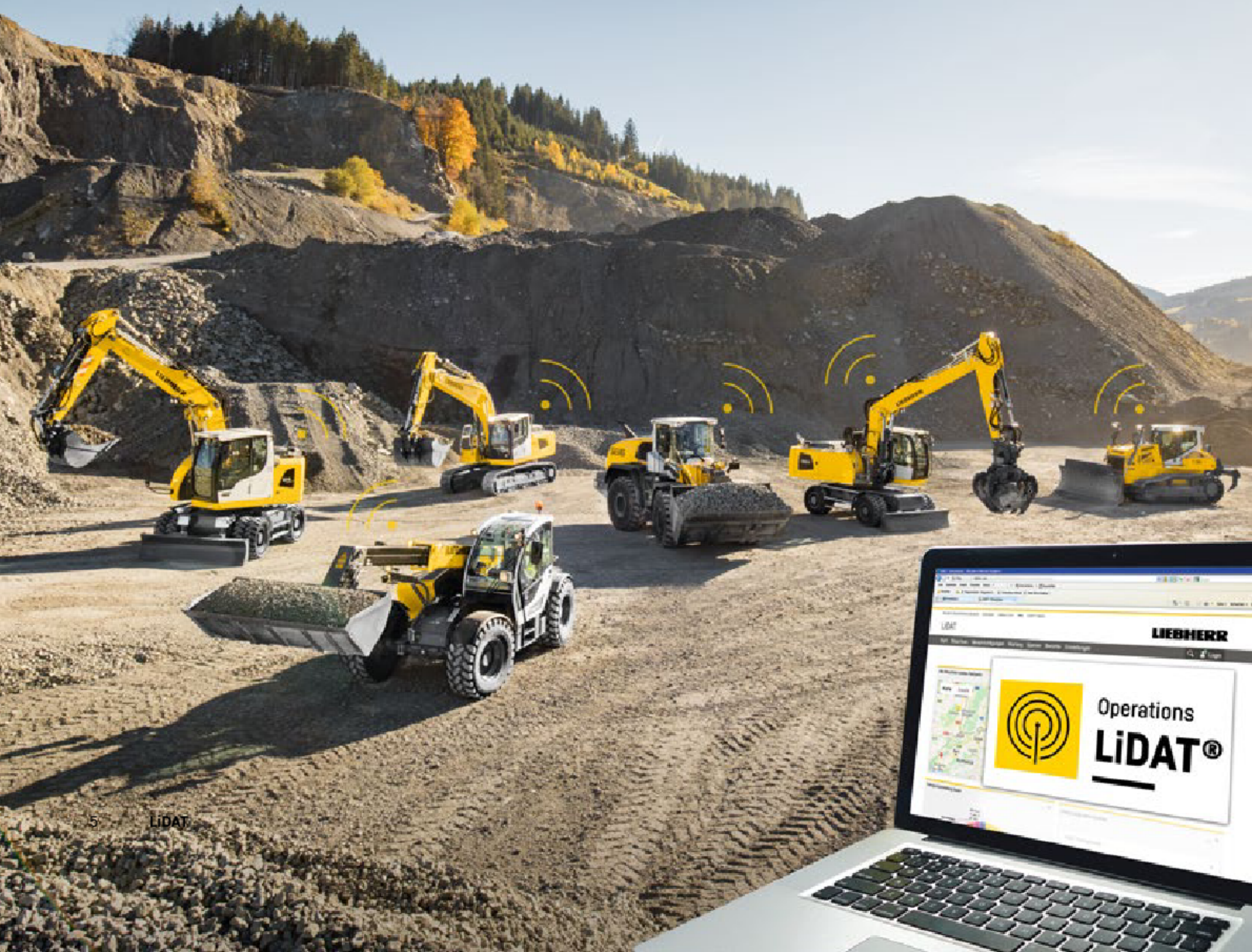
www.liebherr.com

Everything at a Glance

Fleet and plant
management system

LIEBHERR

Earthmoving and material handling technology



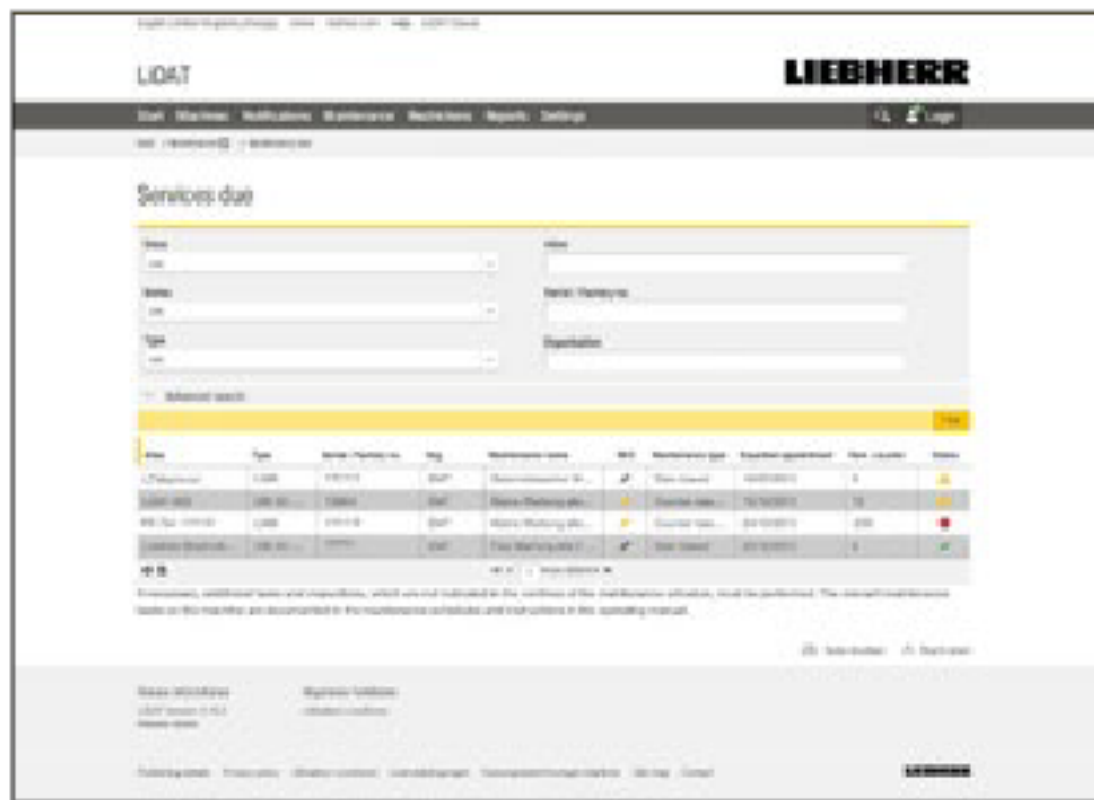


Informed at all times

LiDAT is a data transmission and positioning system for Liebherr machines as well as machines from other manufacturers. Based on state-of-the-art data transmission technology, LiDAT provides information on location as well as operation.

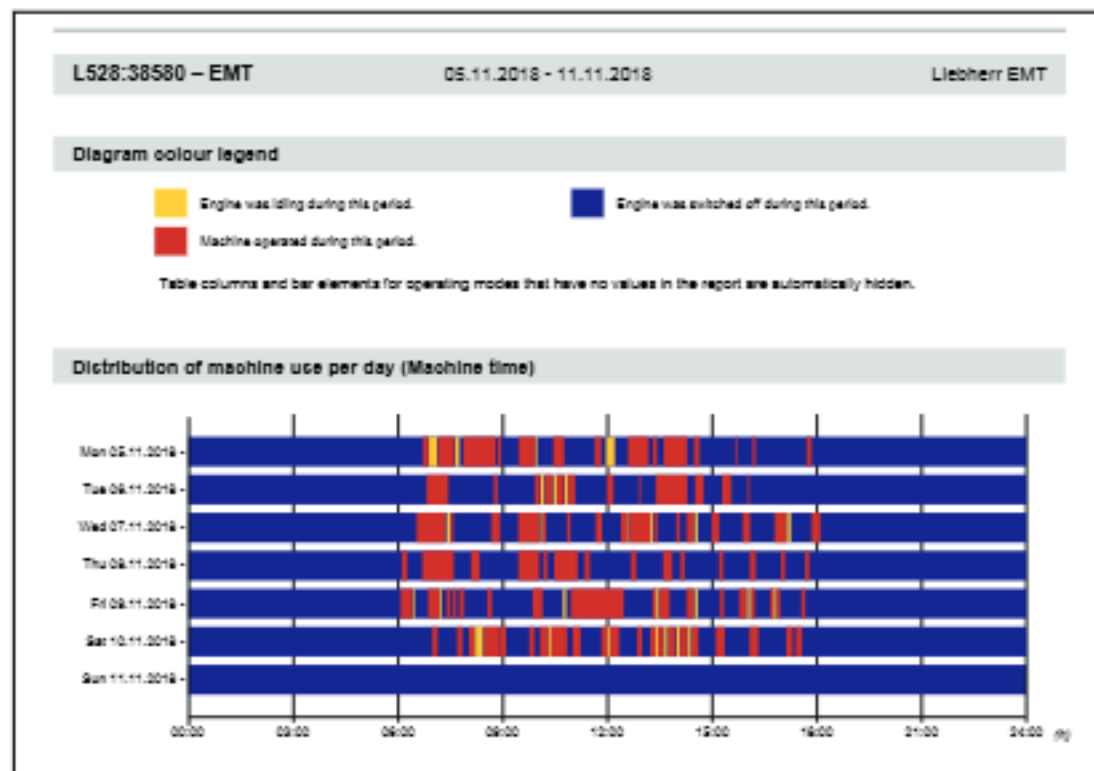
LiDAT Benefits

LiDAT enables efficient management, optimised deployment planning and monitoring of the machines remotely. With LiDAT, all important data can be viewed at any time. The data is updated several times a day and can be accessed online at any time. Important information, such as particular machine status and operating parameters can be sent to your email account as required.



Service information

- Machines messages can be viewed at any time
- Critical machine conditions are transmitted immediately
- Notifications by email possible
- Intelligent maintenance planning for maximum machine availability
- Optimal planning and preparation of service and repair work with required spare parts
- Individual reminder function for additional customer-specific maintenance intervals



Productivity

- Information on machine operation and degree of utilisation
- Logging of the actual machine use
- Display of the start / stop times, idle / working / driving times per day
- Increased economic efficiency of the fleet
- Efficient use of the machine



Geographical and temporal monitoring

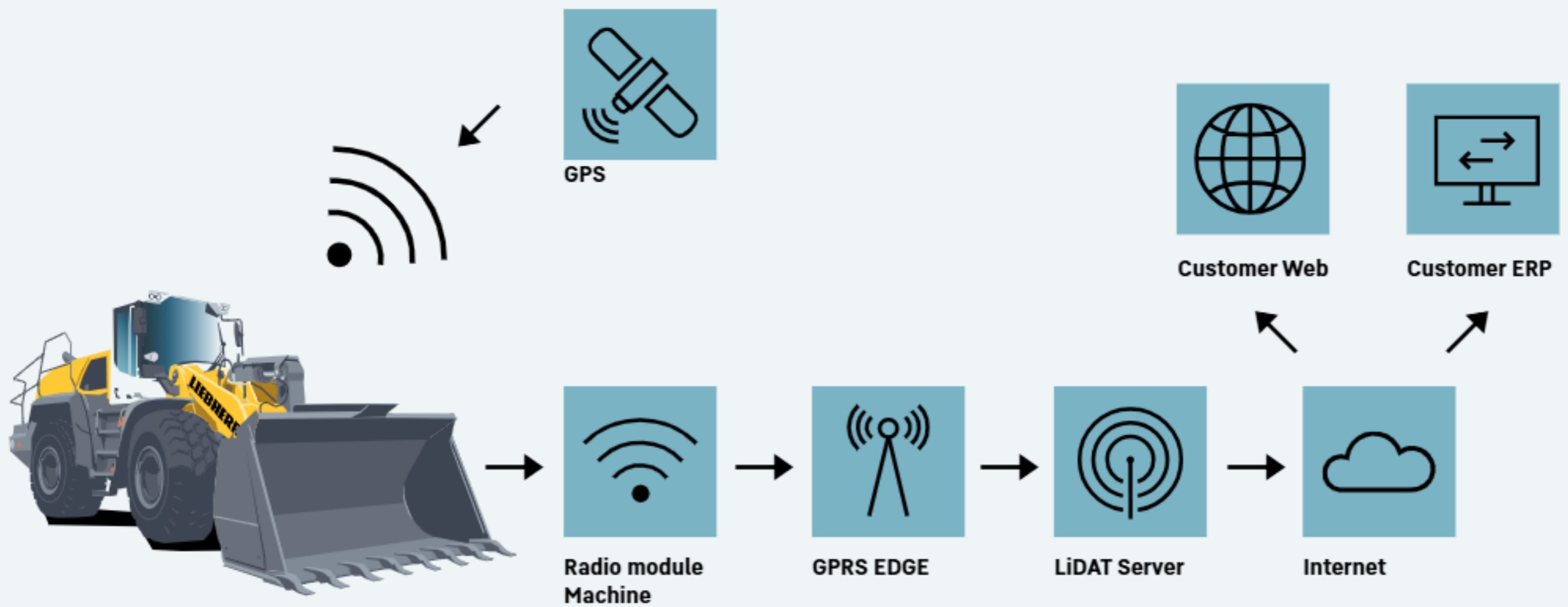
- Individual definition of the permitted working times per machine or per construction site
- Spatial monitoring by demarcated area
- Immediate notification in the event of use outside working hours
- Notification of limit violations also by email, even when the machine is switched off thanks to integrated rechargeable battery



Positioning through GPS

- All machines at a glance
- Positioning several times a day via GPS
- Quick identification of the machine through brief information in the card
- Efficient planning of service, deployment and refuelling
- Quick location of the machine, thanks to integrated rechargeable battery even when switched off

Interface solution



LiDAT web service interface

- Data transfer of the raw machine data directly into customer's own system
- Simplification and optimisation of planning, coordination and billing tasks through integration of the full scope of data in the client's IT system

AEMP web service interface

- AEMP is a generally valid standard web service with a precisely specified, non-modifiable data scope.
- AEMP includes operating hours, total fuel consumption, fuel consumption of the last 24 hours, GPS position.
- Automated retrieval of machine data via web service API (Application Programming Interface)